

# Tracked carriers





# Index

The Merlo Group	Page 4
CINGO tracked carrier range	Page 6
CINGO Technologies	
• Functionality	Page 8
• Transmission	Page 10
• Variants	Page 12
The ranges	Page 14
• Transporter	Page 16
• Multifunction	Page 17
• Tool carrier	Page 18
• Electric	Page 19
Attachments	Page 20
Handler 400 attachment	Page 24
Services	Page 25





## Merlo Headquarters

S. Defendente di Cervasca (CN)  
Italy

Merlo facility with 350000 m<sup>2</sup> of covered area:

- A - Electrical component production
- B - Hydraulic component production
- C - Frame production
- D - Cab production
- E - Axle production
- F - Motor configuration
- G - Machine assembly



## Merlo The technological leader in operating machines

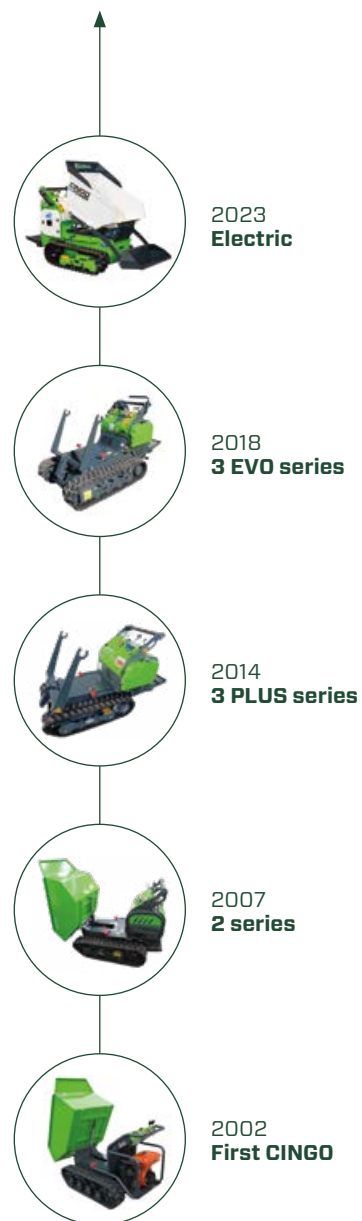
Founded in Cuneo, Italy in 1964, Merlo is a family-run industrial group which designs, produces and markets a wide range of machinery under the Merlo and TreEmme brands.

People, innovation and sustainability are central to the Merlo brand. The Merlo Group is committed to respecting the environment while making the work of the operator (and everyone who is passionately dedicated to constantly improving the efficiency and performance of our products) more functional, safe and comfortable.

Our product portfolio consists of a complete range of telescopic handlers (both fixed and rotating), as well as self-loading concrete mixers (DBMs), TreEmme implement-holders for municipal and forestry use, and multifunction tracked Cingo carrier.

All products in the Merlo range are characterised by innovation, reliability and versatility. These pillars are the foundation of the Merlo Group, and continue to define Merlo's product range to this day.

Merlo S.p.A has always been synonymous with technological innovation in the world of telehandlers.





## **CINGO tracked carrier range** **Compact machines suitable for every use**

Cingo multifunction tracked carriers are machines designed to operate in confined spaces, offering compactness, dynamism and exceptional performance. These vehicles have been created to meet the specific needs of sectors such as construction, agriculture, landscaping and many others, where versatility and compact dimensions are essential. Innovation and versatility are the cornerstones of the Cingo design, supported by the continuous research and decades of experience of the Merlo Group. These vehicles represent a concentrate of technology, designed to achieve three key objectives: safety, versatility and manoeuvrability.

Their extraordinary compactness is the result of the design and integrated production of all components. This feature allows them to operate in confined spaces where larger machines would not be able to access. A true competitive advantage that allows them to reach work areas otherwise difficult to access.

These vehicles are equipped with a wide range of attachments that turn them into extremely versatile machines that can be adapted to different operating requirements. Whether it is a front loader, a hydraulic lift, a telescopic boom or other specialised attachments, the Cingo are able to easily tackle a variety of tasks. This versatility translates into a significant return on investment, as a single machine can be used for multiple applications, reducing costs and maximising operational efficiency.

Finally, the manoeuvrability of Cingo tracked carriers makes them extremely easy to use and control. The ergonomic design of the controls, combined with the precision and responsiveness of the steering systems, allows operators to manoeuvre safely even in confined spaces. This translates into increased productivity and reduced risk of accidents in the workplace.

**Load capacity:**

Capacity from 500 to 1200 kg  
Material can be transported with a variety of attachments including dumper bodies skip and fork manipulators.

**Controls:**

Ergonomic control panel, which makes it easy to use throughout the working day, with simple and intuitive controls.

**Engines:**

The machines can be equipped with Petrol or Diesel engines as required. Electric motorisation is also available for reducing emissions and noise.

**Attachments:**

It is possible to equip the machine with multiple attachments to further maximise versatility and increase the return on investment. A quick-coupling system is also available to speed up attachment changes.

**Tracks:**

Traction is always ensured by the tracks, that allow operation on all surfaces, even in case of uneven or very wet ground. They also reduce ground pressure.

**Transmission:**

Three different types of transmission:

- Hydrostatic transmission with variable displacement pumps and gear motors, for the “EVO” models
- Hydraulic transmission with gear motors, for the Transporter models
- Purely electric transmission, for the M600TDe model.

# Functionality

## A tireless all-rounder.

Cingo tracked carriers are designed to exceed expectations and offer unrivalled versatility, adapting to a wide range of applications in multiple sectors. Whether you need to transport materials, move earth, reach hard-to-reach areas or perform maintenance work, Cingo tracked carriers are ready to meet your needs. Discover the power of the multifunction Cingo tracked carriers, and get ready to be surprised by limitless versatility.

### Steel body

The Cingo Transporter and Cingo Electric tracked carriers are equipped with a reinforced steel body, hinged directly to the base truck. The steel body offers a solid structure resistant to impact and mechanical stress, and its robust design allows it to efficiently transport different types of load and cope with different applications. This makes them particularly suitable for operating in demanding environments, offering strength and durability.



### Versatility

Cingo Multifunction tracked carriers have been specially designed to offer maximum versatility. These models are capable of operating with multiple attachments, achieving maximum performance through the use of variants developed specifically for them, making them a complete and versatile solution for all different work requirements.



## Handling levers

The design of ergonomic controls in CINGO models is a priority to ensure a better working experience for operators. There are two levers for the track controls, one for the right track and one for the left track, allowing precise and controlled handling. In the EVO models, the control levers are equipped with a hydraulic servo-control device, which reduces the effort required to actuate the control. This means that the operator can work for prolonged periods without fatigue and maintain precise control over the carrier movement, ensuring greater efficiency and comfort while working.



## Auxiliary control levers

In addition to the track controls, CINGO models also offer a variety of auxiliary control lever actuators, which allow different attachments to be used. Depending on the model, up to 3 hydraulic outlets may be available, allowing for greater versatility and use with a variety of equipment and attachments.

## Control panel

The control panel of the CINGO models houses the accelerator pedal and, if available, a screen that displays useful information such as total working hours, engine rpm and fuel level. In addition, the control panel can include additional controls such as the emergency button, parking brake and starter. These elements are designed to provide easy access and intuitive control for the operator, increasing safety and efficiency.



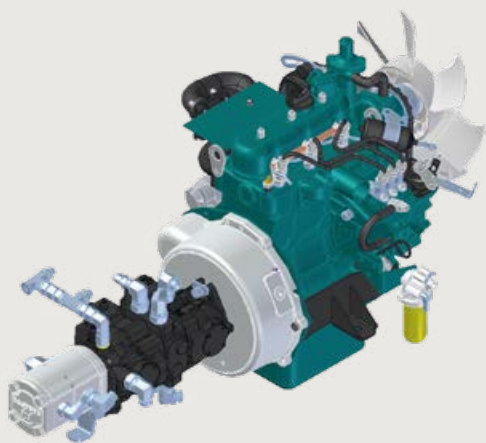
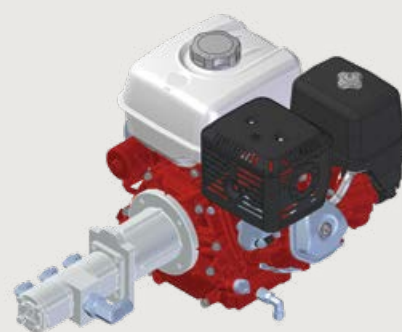
# Transmission

## Guaranteed traction and manoeuvrability, on any surface.

The Cingo range offers tracked carriers with petrol and diesel engines as well as electric motors, and transmission configurations to suit every possible application requirement. Cingo tracked carriers offer a variety of drive systems to suit different working requirements. Depending on the model, you can find different types of transmission: hydraulic, hydraulic with gear motors, hydrostatic with gear motors and power transmission with gear motors.

### Petrol engines

The petrol engine of the Transporter M500 and M700TD models offers a good combination of power and reliability, allowing them to easily tackle rough terrain, steep slopes and adverse conditions. Unlike heavier, bulkier engines, the petrol engine provides sufficient power to meet transport needs without overloading the vehicle and allowing costs to be reduced.



### Diesel engines

The M4.3EVO, M8.3TD-EVO, M8.3EVO and M12.3EVO models are equipped with high-torque diesel engines. The distinguishing feature of these engines is their extraordinary torque, which allows a prompt and immediate response even at the lowest rpm. This means that, even at low speeds, you will have powerful and effortless acceleration, guaranteeing exceptional performance in heavy load situations or on difficult terrain.

### Electric motorisation

The M600TD-e is equipped with two electric motors powered by a lithium-ion battery. The presence of two electric motors makes it possible to optimally distribute power to both tracks, guaranteeing powerful and precise traction on any terrain, and to completely eliminate noise and polluting emissions when using the carrier.



## Tracks

The geometry of the front and lower approach angles of the tracks is designed to make it easier to overcome obstacles along the track, both in forward and reverse. Thanks to the presence of oscillating rollers, vibrations felt by the operator during work are significantly reduced. In addition, these help to increase the contact surface of the tracks with the ground, improving grip and traction.



## Hydraulic transmission

The hydraulic transmission, consisting of gear pumps, offers superior performance compared to a traditional mechanical transmission. The hydraulic motors of the two tracks are controlled via a distributor to move the vehicle. This system guarantees high efficiency, ease of use and great pushing power.

## Hydraulic transmission with gear motors

This configuration increases the reliability of the vehicle, especially in difficult situations such as slopes or overloading, as well as with dynamic braking. The gear motors provide more torque and better load management, ensuring stable and safe operation.



## Hydrostatic transmission

The hydrostatic transmission with gear motors uses variable displacement pumps with hydraulic servo-control. This system offers maximum handling precision in all working conditions. The variable displacement adjustment allows adaptation to different traction and speed requirements, ensuring precise, safe and reliable manoeuvrability.



## Power transmission

The power transmission with electric gear motors is developed to ensure precise movement and tractive force. This system offers an emission-free and silent alternative, ideal for sensitive environments or areas where emissions are limited. The power transmission offers a fast and controlled response, enabling precise handling operations.



# Variants

## The essence of versatility, at your fingertips.

With a wide variety of solutions available, Cingo carriers offer customised configurations for all work requirements, guaranteeing flexibility and optimum performance.

### Quick coupling device

The Cingo Multifunction is equipped with a quick coupling device consisting of two sturdy arms that allow fast and functional attachment assembly. Thanks to this patented technology, attachments can be mounted on the machine quickly and easily, allowing to easily switch from one activity to another. In addition, most of the attachments in the multifunction system are compatible with this quick-coupling device, increasing the versatility and efficiency of the Cingo.



### Stabiliser leg

The stabiliser leg on Cingo tracked carriers ensures greater static stability, especially when using attachments with a high frontal overhang. This device provides a solid and secure base, allowing to operate with confidence and reliability even in demanding loading situations and on rough terrain.

### Oil cooler

The oil cooler of the Cingo tracked carriers is designed to ensure the best oil cooling during use in heavy-duty applications, such as those where continuous delivery is required. This essential component keeps the hydraulic oil at the ideal temperature, ensuring optimum performance and longer component life.



### Wiring for emergency starting

Useful accessory in case of starting with a flat battery. It is designed to be conveniently connected to the rear of the vehicle, allowing the Cingo to be started using power from another source quickly and safely.



### Floating system

The floating attachment is an extremely useful element when using snow ploughs and blowers on uneven surfaces. Thanks to its innovative design, the floating attachment allows the ground to be followed automatically without the need for manoeuvring by the user while driving. This ensures more efficient operation, improved work output and reduced operator effort.

### Pre-filter with continuous ejection

The pre-filter is an essential component for vehicles used in dusty environments. This device filters out dust particles and other impurities in the environment, ensuring a constant flow of clean air to the engine. This ensures the best engine performance, reducing wear and tear and prolonging the life of internal components.



### Working light adjustable on post

The working light accessory is an essential addition to improve visibility in poorly lit environments. The post on the side of the controls allows the angle of the working light to be adjusted, providing an optimal view for different operating needs, even at night, in closed or poorly lit environments.

# The Ranges

## From every need, a range to excel

The extensive Cingo range offers a complete solution for transport and handling. The combination of different models, engines and accessories makes it possible to customise the carrier according to specific needs, guaranteeing optimum performance, versatility and reliability.

The ranges:

- CINGO Transporter
- CINGO Multifunction
- CINGO Tool carrier
- Electric Cingo





## CINGO Transporter

Cingo Transporters are manoeuvrable, extremely compact and safe mini-dumpers offering high-class features. These vehicles boast a hydraulic transmission, a very low centre of gravity and simple, intuitive controls. Depending on the version, they can be equipped with hydraulic motors or hydraulic gear motors with dual speeds. The presence of an overcenter valve guarantees excellent performance and maximum safety when driving on slopes, allowing precise speed control.

Furthermore, changing attachments on the Cingo Transporter is made even easier by the possibility of positioning the attachments on the ground using four feet. This greatly simplifies the attachment change, allowing greater flexibility and speed in adapting the vehicle to different work requirements.

Overall, the Cingo Transporters combine excellent performance, maximum safety and ease of attachment change, offering a versatile and reliable option for transporting materials in confined spaces or difficult terrain.



MODELS	M500	M700TD	M8.3TD-EVO
Maximum load capacity kg	500	700	800
Machine weight kg	210/230	480	510
Maximum length mm	1471	1640	1800
Maximum width mm	690	750	800
Maximum height mm	1125	1230	1175
Distance off the ground/Ground clearance mm	115	100	120
Max. longitudinal slope	35%	35%	35%
Max. cross slope	20%	20%	20%
Maximum speed km/h	3.5	4	4
Engine make	Honda	Honda	Kubota
Model	GX 200	GX 390	Z-602
Fuel	Petrol	Petrol	Diesel
Cylinder no.	1	1	2
Displacement cc	196	389	600
Max. engine speed rpm	3.850±100	3600	3600
Power KW	4,1 kW	8,7 kW	12,5 kW
Ignition	Manual pull start	Manual pull start/Electric	Electric
Engine cooling	Air	Air	Liquid-type
Fuel tank capacity l	3.1	6.1	14
Battery V/Ah	-	12 V	12 V
Transmission type	Hydraulic	Hydraulic	Hydrostatic
Pump cc	3,2 + 3,2	4.27+4.27	11+11
Hydraulic motor	Orbital	Gear motor	Gear motor
Controls / Levers	Hydraulic	Hydraulic	Hydraulic
Operator's console	On the ground	On the ground / Platform	On the ground / Platform
Parking brakes	Manual	Automatic Fast second gear	Automatic Manual Selector
Type	Rubber	Rubber	Rubber
Dimensions	160x72x33	180x72x36	180x72x36
Rollers per side	3	4	4
Service pump cc	-	Gears 6	Gears 8 + 2,5
Auxiliary circuit oil flow rate l/min	-	20	27 + 8
Maximum pressure bar	-	180	180
Auxiliary circuit oil cooling	no	yes	yes
Service lines	2	4	8
MULTIFUNCTION - QUICK-COUPLING	no	no	no



## CINGO Multifunction

The Cingo system offers unique versatility. The quick-coupling device for attachments, consisting of two robust steel arms, is patented and allows quick and easy replacement of attachments. Thanks to this hydraulically operated coupling system, the Cingo can be easily adapted to different work tasks.

Cingo models equipped with hydrostatic transmission with gear motors have an integrated parking brake and excellent dynamic braking. This results in shorter stopping distances and therefore greater safety. The hydraulic servo-assisted controls allow managing the speed, which can vary from a few metres per hour up to a maximum of 5 km/h, and controlling the trajectory with ease and millimetre precision.

Overall, the Cingo system offers a combination of performance, safety and ease of use that makes it ideal for a wide range of work applications. Its versatility distinguishes it as an effective and reliable solution for multiple work requirements.



MODELS	M8.3EVO	M12.3EVO
Maximum load capacity kg	800	1200
Machine weight kg	510	720
Maximum length mm	1620	1800
Maximum width mm	800	1000
Maximum height mm	1175	1144
Distance off the ground/Ground clearance mm	100	110
Max. longitudinal slope	35%	35%
Max. cross slope	20%	20%
Maximum speed km/h	4	5
Engine make	Kubota	Kubota
Model	Z-602	D722
Fuel	Diesel	Diesel
Cylinder no.	2	3
Displacement cc	600	720
Max. engine speed rpm	3600	3600
Power KW	12,5 kW	14,9 kW
Ignition	Electric	Electric
Engine cooling	Liquid-type	Liquid-type
Fuel tank capacity l	14	14
Battery V/Ah	12 V	12 V
Transmission type	Hydrostatic	Hydrostatic
Pump cc	11+11	13+13
Hydraulic motor	Gear motor	Gear motor
Controls / Levers	Hydraulic	Hydraulic
Operator's console	On the ground / Platform	On the ground / Platform
Parking brakes	Automatic Manual Selector	Automatic Manual Selector
Type	Rubber	Rubber
Dimensions	180x72x36	230x72x40
Rollers per side	4	4
Service pump cc	Gears 8 + 2,5	Gears 8 + 2,5
Auxiliary circuit oil flow rate l/min	27 + 8	27 + 8
Maximum pressure bar	180	200
Auxiliary circuit oil cooling	yes	yes
Service lines	8	8
MULTIFUNCTION - QUICK-COUPLING	yes	yes

## CINGO Tool carrier

This versatile tracked tool carrier has been specially designed to meet the needs of the wine-growing and agricultural sector in general. Its versatility derives from the possibility of equipping the base truck with a wide range of specific attachments, making it a truly universal tool for multiple applications.

The machine's reduced width allows easy passage in tight spaces, as between vineyard rows. This is particularly advantageous for operations requiring precision and manoeuvrability in narrow areas. The Cingo is designed to meet these challenges without compromising on performance or functionality.

Power comes from a sturdy 25-HP diesel engine, which provides the necessary strength to tackle various agricultural tasks. The track with oscillating rollers provides excellent ground contact, allowing the Cingo to operate on different terrains and in various conditions. This results in greater traction and stability while working, increasing efficiency and overall productivity.



MODELS	M4.3EVO
Maximum load capacity kg	400
Machine weight kg	750
Maximum length mm	2098
Maximum width mm	679
Maximum height mm	1397
Distance off the ground/Ground clearance mm	90
Max. longitudinal slope	35%
Max. cross slope	20%
Maximum speed km/h	5
Engine make	
Model	
Fuel	Diesel
Cylinder no.	3
Displacement cc	1129
Max. engine speed rpm	3100
Power KW	19 kW
Ignition	Electric
Engine cooling	Liquid-type
Fuel tank capacity l	25
Battery V/Ah	12 V
Transmission type	Hydrostatic
Pump cc	17+17
Hydraulic motor	Gear motor
Controls / Levers	Hydraulic
Operator's console	On the ground / Platform
Parking brakes	Automatic Manual Selector
Type	Rubber
Dimensions	180x72x41
Rollers per side	6
Service pump cc	Gears 12+4
Auxiliary circuit oil flow rate l/min	35+14
Maximum pressure bar	180
Auxiliary circuit oil cooling	yes (two radiators)
Service lines	12
MULTIFUNCTION - QUICK-COUPLING	no



## Electric Cingo

The new electric Cingo range has been designed with the aim of maximising energy efficiency in order to offer the greatest possible autonomy. The key components of this range include a high-capacity lithium battery, electric gear motors and an electric pump. These elements work in synergy to ensure optimal performance in every environmental and working situation.

The movements of the electric Cingo are precise, responsive and quiet thanks to the electric gear motor technology. This not only provides a more comfortable driving experience, but also helps reduce noise impact while working.

The charging socket of the electric Cingo complies with strict automotive certifications, ensuring safety and compatibility during the charging process. This allows the vehicle to be charged in all conditions and fast charging times, ensuring maximum operational availability.

MODELS	M600TD-E
Maximum load capacity kg	600
Machine weight kg	500
Maximum length mm	1560
Maximum width mm	753
Maximum height mm	1200
Distance off the ground/Ground clearance mm	77
Max. longitudinal slope	35%
Max. cross slope	20%
Maximum speed km/h	3 - 5
Supply	Electric
Battery capacity Wh	7500
Voltage V	48
Recharge time h	3
Indicative autonomy h	4
Hydraulic oil type	Biodegradable
Transmission type	Electric
Engine cc	2 x Gear motors
Drive mode	Eco / Power
Controls / Levers	Electric
Operator's console	Platform
Parking brakes	Automatic
Type of tracks	Rubber
Dimensions cm	180x72x36
Rollers per side	4
Service pump cc	1.7
Auxiliary circuit oil flow rate l/min	3.5
Maximum pressure bar	150
Auxiliary circuit oil cooling	-
Service lines	2

# Attachments

## Find out a world of possibilities.

The Cingo is transformed into a powerful, highly efficient and profitable working tool by the wide range of attachments available. This leads to significant cost reductions in many different tasks, which would normally require the use of specific machines.

The excellent features and performance of Cingo attachments are the result of an integrated design and an exclusive production process. The multifunction system on the Cingo vehicles allows attachments to be changed quickly and safely. This means that the operator can save valuable time during installation and achieve greater profitability. The versatility offered by the attachment change system allows the Cingo to be adapted to different work requirements quickly and easily.

CINGO CARRIER MODELS	M500*	M700TD	M8.3TD-EVO
Dumper body	X	X	X
Dumper body with self-loading bucket	X	X	X
Dumper body with openable sideboards	X	X	X
200-litre concrete mixer		X	X
200-litre concrete mixer with self-loading bucket		X	X
Front blade			X
High-capacity dumper body with front sideboard		X	X
High-capacity dumper body with front sideboard and self-loading bucket		X	X
Dumper body with high unloading and self-loading bucket		X	X
200-litre sprayer with dedicated petrol engine		X	X
Body with high unloading		X	
Body with high unloading and self-loading bucket		X	

\* the attachments are not interchangeable for the M500 mini series

CINGO MULTIFUNCTION MODELS	M8.3EVO	M12.3EVO
Attachments for the construction and earth-moving sectors		
Dumper body	X	X
Dumper body with self-loading bucket	X	X
Dumper body with high unloading	X	X
200-litre concrete mixer	X	X
200-litre concrete mixer with self-loading bucket	X	X
Manual hydraulic hammer - 20 kg	X	X
Dumper body with openable sideboards and trilateral tipping	X	X
Attachments for agriculture, forestry and green areas		
Dumper body with openable sideboards and agricultural flat bed	X	X
Shredder for shrubs, grass and stalks	X	X
Auger	X	X
Lift carrier with forks	X	X
Pallet transporter	X	X
Lift carrier with forks and crate presses for hive boxes	X	X
Winch		X
Snow blower	X	X
Front blade with hydraulic positioning	X	X
Snow plough	X	X
HANDLER 400 ATTACHMENTS and accessories		
HANDLER 400 - telescopic boom complete with forks		X
Bucket for Handler 400		X
4x1 bucket for Handler 400		X
Fork with grab for Handler 400		X

## Dumper

Ideal for transporting bulk materials and for precision unloading. Compatible with the quick-coupling system.

	M 8.3EVO	M 12.3EVO
Dumper capacity (l)	400	550
Load capacity (kg)	730	1100
Width (mm)	800	920



## Dumper with self-loading bucket

The advantage of having the front bucket with hydraulic lifting for loading the material. Compatible with the quick-coupling system.

	M 8.3EVO	M 12.3EVO
Dumper capacity (l)	400	550
Load capacity (kg)	655	980
Bucket capacity (l)	80	90
Width (mm)	970	1080

## Trilateral tipper

The versatility of a tipper body with movable tipping sideboards on three sides.

	M 8.3EVO	M 12.3EVO
Load capacity (kg)	710	1100
Width (mm)	750	920
Length (mm)	1050	1250
Height of the sideboards (mm)	450	450



## Tipper body with sideboards

The versatility of a tipper body with movable sideboards, which can become an integral part of the loading surface if necessary, thus increasing its surface area.

	M 8.3EVO	M 12.3EVO
Load capacity (kg)	720	1100
Width with sideboards closed (mm)	800	1000
Width with horizontal sideboards (mm)	1445	1650
Height of the sideboards (mm)	300	300

## Bush cutter

Ideal for shredding pruning clippings, stalks, small shrubs and for cleaning embankments and paths. Compatible with the quick-coupling system.

	M 8.3EVO	M 12.3EVO
Working width (mm)	800	1100





## Lift carrier with forks

Ideal for precision handling operations when high lifting capacities are required. Compatible with the quick-coupling system.

	M 8.3EVO	M 12.3EVO
Maximum load capacity (kg)	200	400
Lift height (mm)	1600	1800

## Telehandler

An agile work tool that can be equipped with various types of attachments (shovels, forks, grapples, buckets, etc.) for excavating, lifting, loading, transporting, and handling operations. Compatible with the quick-coupling system.

	M 12.3EVO
Maximum load capacity (kg)	400
Lift height (mm)	3400



## Snow blower

This hydraulically-operated unit features a turbine ejector with a manually selectable continuous spray direction. Compatible with the quick-coupling system.

	M 8.3EVO	M 12.3EVO
Working width (mm)	800	1000

## Snow plough

Hydraulic orientation, suitable for snow removal. It is equipped with an anti-shock system with spring return, which allows for easy use while avoiding problems on uneven ground. Wear-resistant steel scraper.

	M 8.3EVO	M 12.3EVO
Blade width (mm)	1300	1300
Blade height (mm)	470	470
Blade angle (degrees)	±30	±30



## Front blade

Easy to operate and ideal for cleaning stalls, piling loose materials, and levelling areas of ground.

	M 8.3EVO	M 12.3EVO
Blade width (mm)	1100	1300
Blade height (mm)	470	470
Blade angle (degrees)	±18	±18

## Auger

For drilling precision holes in the ground for poles, supports, or small trees. Compatible with the quick-coupling system.

	M 8.3EVO	M 12.3EVO
Hole diameter (mm)	200	200
Maximum working depth (mm)	800	800



## Winch with loading platform

The advantage of pairing a powerful hydraulic pulling system with a versatile means of transport. Ideal for use in the forestry sector.

	M 12.3EVO
Maximum load capacity (kg)	1000
Maximum pull force (kg)	1500
Cable length (m)	50

## Manual hydraulic hammer

For carrying out small or large demolition operations with maximum precision and effectiveness.

	M 8.3EVO	M 12.3EVO
Tool mass (kg)	20	20



## Concrete mixer

Designed for mixing concrete in the required quantities, whenever and wherever needed. Compatible with the quick-coupling system.

	M 8.3EVO	M 12.3EVO
Concrete mixer capacity (l)	350	350
Concrete yield (l)	200	200
Attachment width (mm)	1050	1050

## Concrete mixer with self-loading bucket

Helps increase productivity by directly loading the aggregates. Compatible with the quick-coupling system.

	M 8.3EVO	M 12.3EVO
Concrete mixer capacity (l)	350	350
Concrete yield (l)	200	200
Bucket capacity (l)	40	40
Attachment width (mm)	1050	1050



# Attachments

## Handler 400

The Cingo system attachments are the winning idea that led to a new concept of versatility for tracked carriers. There are countless work tools available for each model, offering numerous innovative technological features designed to increase their usage potential, enhance their versatility, and optimise their use in every field: from construction to agriculture, recycling and horticulture.

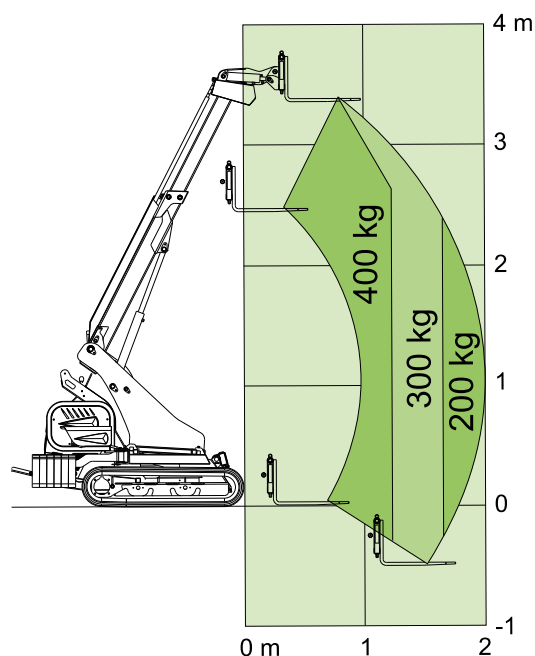
It only takes a few seconds to connect the desired equipment in order to quickly and effectively tackle any need that may arise in terms of lifting, excavating, transporting, loading and unloading, and precision handling operations.

### HANDLER 400

This exclusive Handler attachment, which is completely interchangeable with every other accessory designed for the multifunction system, transforms your unit into a real compact telehandler. The attachment is designed to be mounted on the Cingo M12.3EVO model.

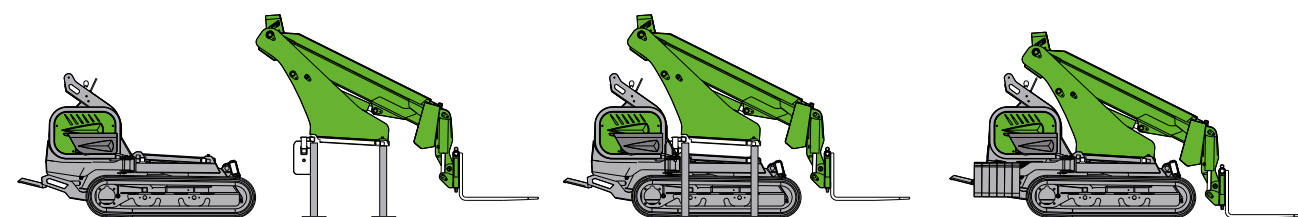
While the standard Handler 400 comes with a fork attachment, a wide range of other attachments (shovels, fork with grab, log grapple, hedge trimmer, etc.) for excavating, lifting, carrying and cutting can also be mounted on the telescopic boom whenever necessary.

Technical data	
Maximum load capacity (kg)	400
Handler attachment weight (kg)	680 (without the machine)
Lift height (m)	3.4
Kubota Diesel Engine (HP)	21
Maximum speed (km/h)	4.9
Transmission	Hydrostatic
Boom controls	Electromechanical joystick
Front hydraulic stabiliser	Standard
Double pump and auxiliary service line	Standard



The Handler 400's maximum load capacity with the boom retracted amounts to 400 kg (including the fork attachment).

The attachment is equipped with an anti-tipping system in order to ensure maximum operator safety.







## Training Centre

The Merlo Training and Research Centre (MTRC) was as a result of Merlo's firm belief that safety cannot exist without adequate training. Established with the aim of providing adequate training in compliance with the current laws and decrees, the Training and Research Centre expresses Merlo Group's desire to excel on an international level in the field of occupational safety training, by providing training courses for the operators of aerial work platforms, forklifts, telehandlers, cranes, earthmoving machinery, agricultural and forestry tractors, snow ploughs, urban sanitation vehicles, and more.



## Service

Merlo is committed to offering complete and qualified support to its customers, providing specialised technical support and maintenance services. Regular and accurate maintenance of Merlo vehicles is essential to preserve their performance, safety and service life. Thanks to the in-depth knowledge of their products, Merlo service technicians are able to carry out checks, overhauls and targeted interventions to keep your vehicle in optimum condition.



## Spare Parts

We manufacture over 90% of our machine components internally; thanks to this, we are able to guarantee original spare parts made specifically for our machinery. In addition, our spare parts are subject to continuous and rigorous quality controls. To limit downtime and ensure optimal performance, we also continue to invest in the management of our spare parts and logistics services, which are constantly expanding. We strive to always deliver the right parts, to the right place, at the right time, with a fast and efficient customer-centric supply chain.

The figures:

- **5** - Warehouses worldwide
- **Over 16000 cu.m**  
Storage surface area
- **Over 35000**  
Spare parts codes managed
- **Over 1400000**  
Spare parts delivered per year







**Your Merlo dealer**



**MERLO S.p.A.**

Via Nazionale, 9 - 12010 S. Defendente di Cervasca (CN) Italy  
Tel. +39 0171 614111 - Fax +39 0171 684101  
[www.merlo.com](http://www.merlo.com) - [info@merlo.com](mailto:info@merlo.com)

